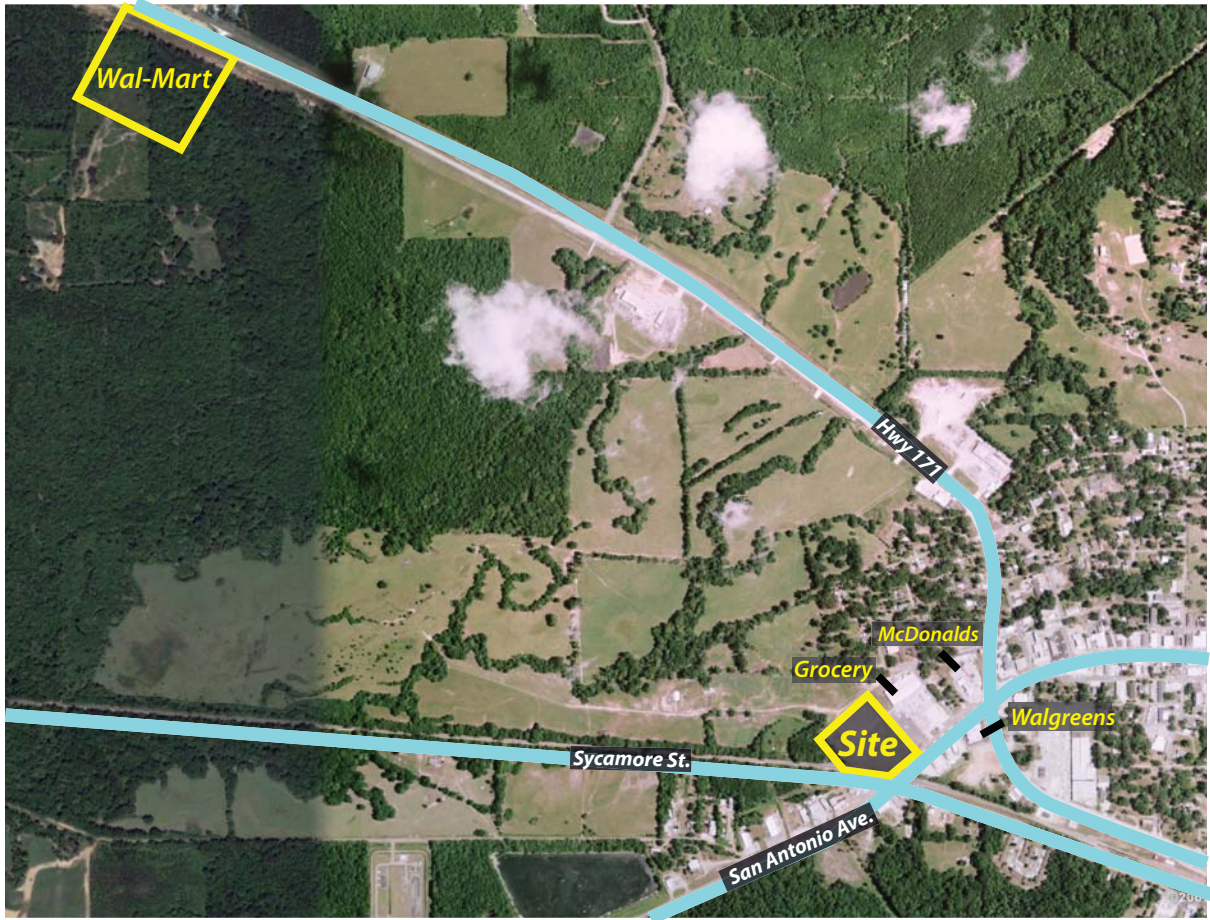


Former Wal-Mart building
Many, LA
San Antonio Avenue



We get retail.

Aerial



Demographics

Radius 1: 295 SAN ANTONIO AVE, MANY, LA 71449-3010, aggregate

Radius 2: 295 SAN ANTONIO AVE, MANY, LA 71449-3010, aggregate

Radius 3: 295 SAN ANTONIO AVE, MANY, LA 71449-3010, aggregate

Description	0.00 - 10.00 miles		0.00 - 20.00 miles		0.00 - 30.00 miles	
	Radius 1	%	Radius 2	%	Radius 3	%
Population						
2016 Projection	9,835		29,116		73,560	
2011 Estimate	10,028		29,479		74,025	
2000 Census	10,272		29,673		73,743	
1990 Census	10,490		28,561		69,533	
Growth 1990 - 2000	-2.08%		3.89%		6.05%	
Households						
2016 Projection	3,887		12,041		29,869	
2011 Estimate	3,937		12,096		29,791	
2000 Census	3,908		11,768		28,282	
1990 Census	3,804		10,703		25,180	
Growth 1990 - 2000	2.73%		9.95%		12.32%	
2011 Est. Population by Single Classification Race						
	10,028		29,479		74,025	
White Alone	6,458	64.40	21,830	74.05	49,812	67.29
Black or African American Alone	2,836	28.28	4,607	15.63	18,941	25.59
American Indian and Alaska Native Alone	434	4.33	2,073	7.03	2,570	3.47
Asian Alone	30	0.30	77	0.26	430	0.58
Native Hawaiian and Other Pacific Islander Alone	3	0.03	10	0.03	24	0.03
Some Other Race Alone	67	0.67	143	0.49	603	0.81
Two or More Races	200	1.99	740	2.51	1,645	2.22
2011 Est. Population Hispanic or Latino						
	10,028		29,479		74,025	
Hispanic or Latino	266	2.65	994	3.37	2,019	2.73
Not Hispanic or Latino	9,762	97.35	28,485	96.63	72,006	97.27
2011 Tenure of Occupied Housing Units						
	3,937		12,096		29,791	
Owner Occupied	2,691	68.35	9,337	77.19	20,962	70.36
Renter Occupied	1,247	31.67	2,759	22.81	8,829	29.64
2011 Average Household Size						
	2.47		2.40		2.42	



Prepared By:

Nielsen Solution Center 1 800 866 6511

© 2011 The Nielsen Company. All rights reserved.

Radius 1: 295 SAN ANTONIO AVE, MANY, LA 71449-3010, aggregate

Radius 2: 295 SAN ANTONIO AVE, MANY, LA 71449-3010, aggregate

Radius 3: 295 SAN ANTONIO AVE, MANY, LA 71449-3010, aggregate

Description	0.00 - 10.00 miles		0.00 - 20.00 miles		0.00 - 30.00 miles	
	<i>Radius 1</i>	%	<i>Radius 2</i>	%	<i>Radius 3</i>	%
2011 Est. Households by Household Income	3,937		12,096		29,791	
Income Less than \$15,000	1,012	25.70	2,716	22.45	7,244	24.32
Income \$15,000 - \$24,999	624	15.85	1,727	14.28	4,349	14.60
Income \$25,000 - \$34,999	556	14.12	1,745	14.43	4,057	13.62
Income \$35,000 - \$49,999	554	14.07	1,952	16.14	4,705	15.79
Income \$50,000 - \$74,999	638	16.21	2,178	18.01	4,819	16.18
Income \$75,000 - \$99,999	230	5.84	810	6.70	2,113	7.09
Income \$100,000 - \$124,999	145	3.68	459	3.79	1,181	3.96
Income \$125,000 - \$149,999	61	1.55	179	1.48	448	1.50
Income \$150,000 - \$199,999	65	1.65	163	1.35	416	1.40
Income \$200,000 - \$499,999	44	1.12	144	1.19	403	1.35
Income \$500,000 and over	8	0.20	24	0.20	55	0.18
2011 Est. Average Household Income	\$43,929		\$45,848		\$45,618	
2011 Est. Median Household Income	\$30,978		\$34,198		\$33,138	
2011 Est. Per Capita Income	\$17,485		\$18,917		\$18,485	
2011 Median HH Inc by Single Race Class or Ethn						
White Alone	36,438		37,316		38,899	
Black or African American Alone	19,229		19,709		18,897	
American Indian and Alaska Native Alone	33,824		34,438		35,016	
Asian Alone	63,636		58,333		45,577	
Native Hawaiian and Other Pacific Islander Alone	175,000		108,750		42,500	
Some Other Race Alone	35,208		32,778		36,250	
Two or More Races	32,727		32,907		30,811	
Hispanic or Latino	26,111		28,621		34,286	
Not Hispanic or Latino	31,066		34,293		33,117	



Prepared By:

Nielsen Solution Center 1 800 866 6511

© 2011 The Nielsen Company. All rights reserved.