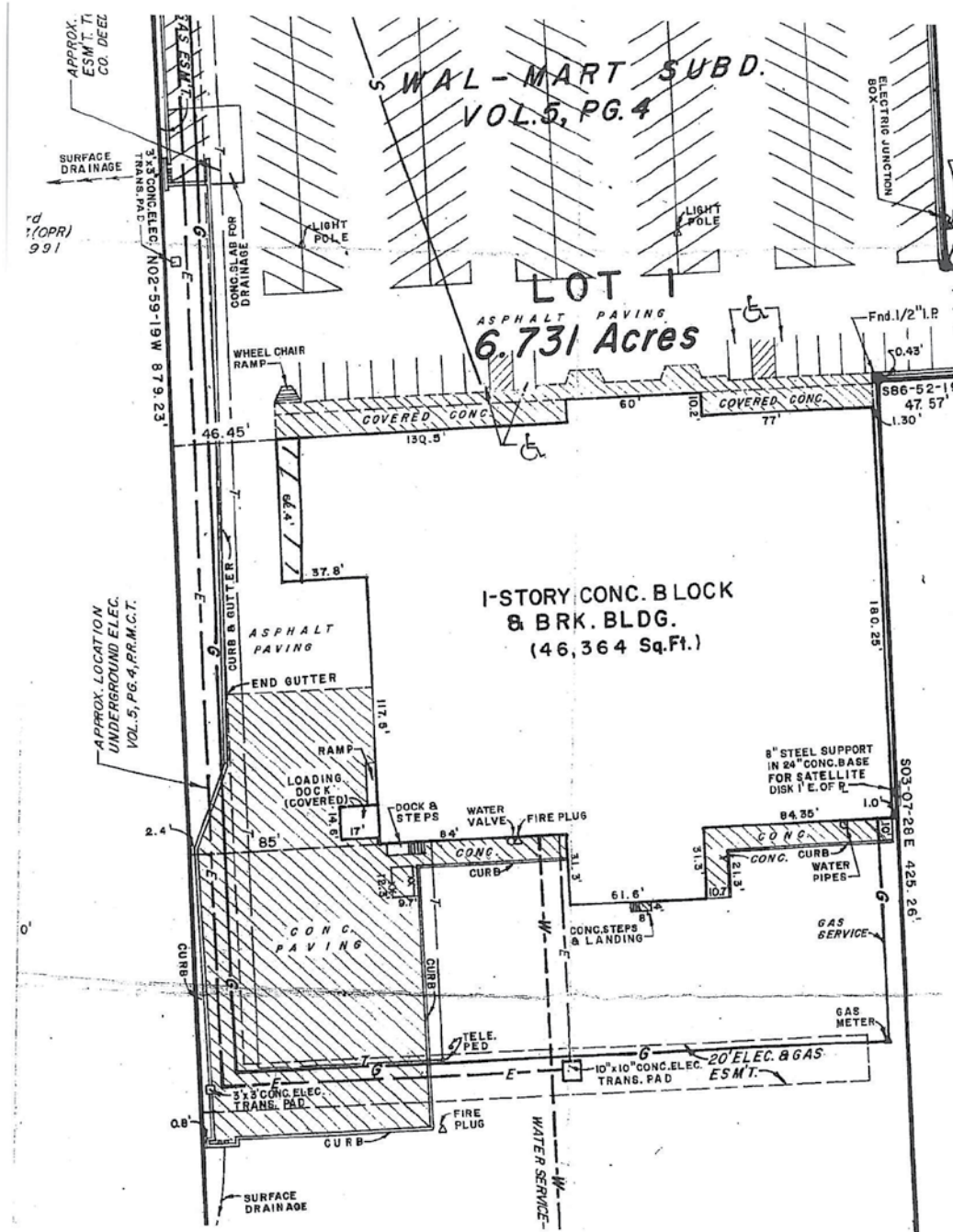


**Former Wal-Mart building
Hondo, TX
Highway 90**



We get retail.

Aerial



Demographics

Radius 1: 109 22ND ST, HONDO, TX 78861-2514, aggregate

Radius 2: 109 22ND ST, HONDO, TX 78861-2514, aggregate

Radius 3: 109 22ND ST, HONDO, TX 78861-2514, aggregate

Description	0.00 - 5.00 miles		0.00 - 10.00 miles		0.00 - 15.00 miles	
	Radius 1	%	Radius 2	%	Radius 3	%
Population						
2016 Projection	10,175		14,437		21,595	
2011 Estimate	9,719		13,752		20,433	
2000 Census	8,580		12,056		17,613	
1990 Census	6,485		8,777		12,041	
Growth 1990 - 2000	32.31%		37.36%		46.28%	
Households						
2016 Projection	3,083		4,628		7,031	
2011 Estimate	2,913		4,368		6,615	
2000 Census	2,505		3,743		5,608	
1990 Census	2,165		2,938		4,035	
Growth 1990 - 2000	15.70%		27.40%		38.98%	
2011 Est. Population by Single Classification Race						
White Alone	7,294	75.05	10,708	77.87	16,003	78.32
Black or African American Alone	968	9.96	1,008	7.33	1,057	5.17
American Indian and Alaska Native Alone	44	0.45	72	0.52	103	0.50
Asian Alone	35	0.36	53	0.39	82	0.40
Native Hawaiian and Other Pacific Islander Alone	0	0.00	2	0.01	4	0.02
Some Other Race Alone	1,169	12.03	1,580	11.49	2,634	12.89
Two or More Races	209	2.15	328	2.39	551	2.70
2011 Est. Population Hispanic or Latino						
Hispanic or Latino	5,310	54.64	6,742	49.03	9,330	45.66
Not Hispanic or Latino	4,410	45.38	7,009	50.97	11,103	54.34
2011 Tenure of Occupied Housing Units						
Owner Occupied	2,053	70.48	3,287	75.25	5,171	78.17
Renter Occupied	860	29.52	1,081	24.75	1,444	21.83
2011 Average Household Size						
	2.79		2.78		2.83	



Prepared By:

Nielsen Solution Center 1 800 866 6511

© 2011 The Nielsen Company. All rights reserved.

Radius 1: 109 22ND ST, HONDO, TX 78861-2514, aggregate

Radius 2: 109 22ND ST, HONDO, TX 78861-2514, aggregate

Radius 3: 109 22ND ST, HONDO, TX 78861-2514, aggregate

Description	0.00 - 5.00 miles		0.00 - 10.00 miles		0.00 - 15.00 miles	
	Radius 1	%	Radius 2	%	Radius 3	%
2011 Est. Households by Household Income	2,913		4,368		6,615	
Income Less than \$15,000	476	16.34	643	14.72	884	13.36
Income \$15,000 - \$24,999	497	17.06	654	14.97	873	13.20
Income \$25,000 - \$34,999	410	14.07	578	13.23	892	13.48
Income \$35,000 - \$49,999	522	17.92	772	17.67	1,161	17.55
Income \$50,000 - \$74,999	526	18.06	868	19.87	1,366	20.65
Income \$75,000 - \$99,999	243	8.34	406	9.29	653	9.87
Income \$100,000 - \$124,999	112	3.84	198	4.53	358	5.41
Income \$125,000 - \$149,999	67	2.30	128	2.93	222	3.36
Income \$150,000 - \$199,999	29	1.00	63	1.44	116	1.75
Income \$200,000 - \$499,999	25	0.86	48	1.10	76	1.15
Income \$500,000 and over	5	0.17	10	0.23	14	0.21
2011 Est. Average Household Income	\$47,824		\$52,334		\$55,051	
2011 Est. Median Household Income	\$37,092		\$41,008		\$43,514	
2011 Est. Per Capita Income	\$16,587		\$18,256		\$18,971	
2011 Median HH Inc by Single Race Class or Ethn						
White Alone	38,828		42,949		45,910	
Black or African American Alone	23,248		22,450		20,645	
American Indian and Alaska Native Alone	89,113		46,154		43,053	
Asian Alone	32,562		33,450		34,934	
Native Hawaiian and Other Pacific Islander Alone	20,000		20,000		25,681	
Some Other Race Alone	30,938		34,260		34,684	
Two or More Races	25,584		28,225		32,829	
Hispanic or Latino	31,330		33,157		34,751	
Not Hispanic or Latino	47,940		50,301		51,373	



Prepared By:

Nielsen Solution Center 1 800 866 6511

© 2011 The Nielsen Company. All rights reserved.